

Spectral Characteristics of Epicocconone

Epicocconone is the fluorophore in:

- LavaPurple
- LavaCell
- LavaPep
- LavaDigest
- FluoroProfile



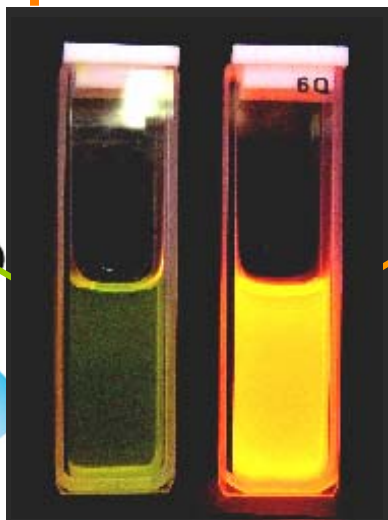
Lava is a trademark of gelcompany
FluoroProfile is a trademark of Sigma Aldrich

Fluorescence on reversible conjugation with proteins and peptides

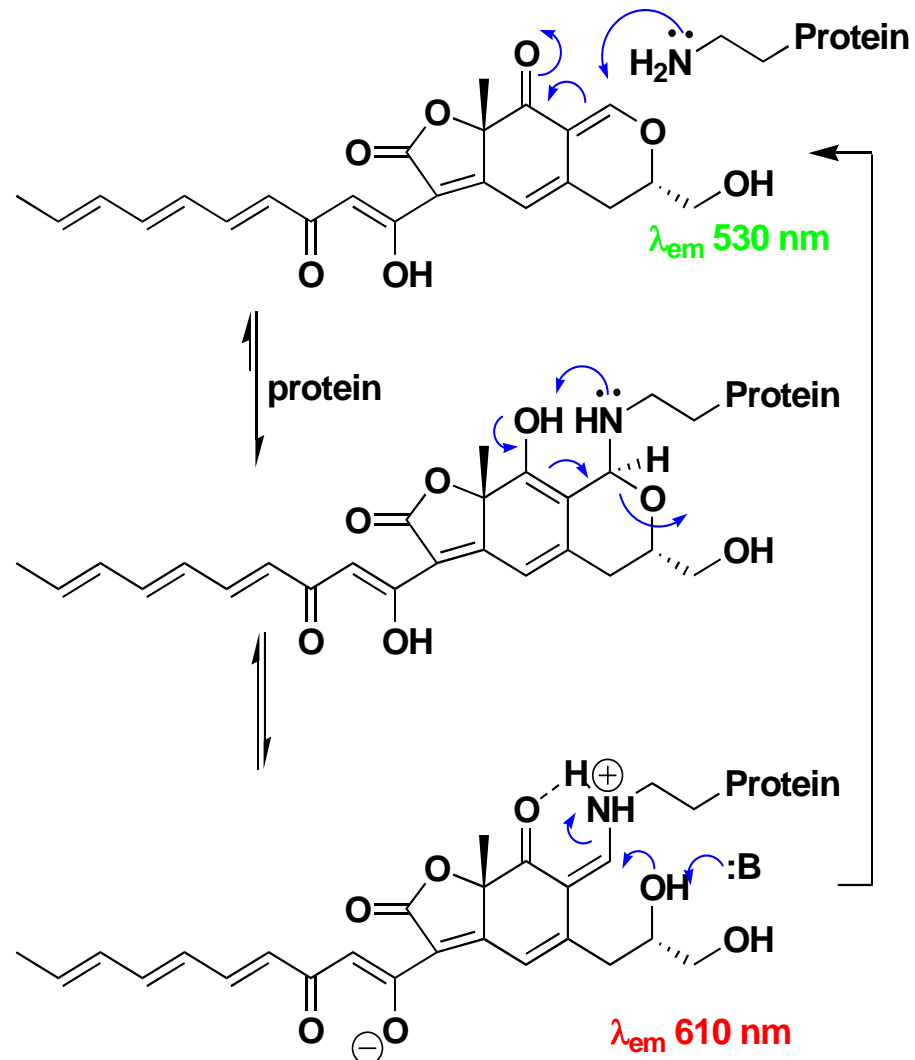
Reaction with proteins causes fluorescent shift from weak green to intense red / orange fluorescence

Epicocconone

Without protein



With protein



Coghlan *et al.*, 2005, *Org. Lett.* 7, 2401-4

Spectral characteristics

