

EASY TO USE, ONE TUBE PROTOCOL
TO LYSE EVEN THE TOUGHEST CELLS

EVERYTHING YOU NEED FOR A COMPACT,
ALL INCLUSIVE HORIZONTAL GEL SYSTEM

microLYSIS[®]-PLUS

Tough cells, (eg. plant and animal tissue)
to PCR in thirty minutes

Protocol:

- Mix cells with 20 µl **microLYSIS[®]-PLUS**
- Overlay with mineral oil if necessary
- Place in a Thermal Cycler

Cycling Profile:

- Step 1: 65°C for 15 mins* Step 5: 65°C for 1 min
- Step 2: 96°C for 2 mins Step 6: 96°C for 30 secs
- Step 3: 65°C for 4 mins Step 7: 20°C hold
- Step 4: 96°C for 1 min

After cycling, all or part of the **microLYSIS[®]-PLUS/DNA** mixture can be used directly in PCR. (It can make up to 40% of the final volume of most PCR mixtures). Or it can be stored at -20°C for future use.

* For very tough cells this incubation may need to be longer than 15 minutes

microLYSIS-PLUS

CAT# 2MLP-100

100 preps

CAT# 2MLP-250

250 preps

Store at -20°C
For Research Only

FOR A COMPLETE SYSTEM

Order **microLYSIS[®]-PLUS** and **MegaMix~Royal**

Mupid[®]-exu

New generation submarine electrophoresis system

- **multi function power supply**
 - timer function (0-99 min.)
 - 7 voltage variations
 - safety lid with interlock system
 - current regulation
 - storage of set values
 - global input voltage compatibility
- **uv transparent electrophoresis tank**
 - multichannel-pipette compatible
 - washable
- **gel trays**
 - 6cm and 12cm uv transparent trays
- **safety lid**
 - functionally designed handgrip
- **combs**
 - 13 and 26 well combs
 - multichannel-pipette compatible
- **gel casting stand**
 - comb position easily changed
 - up to 4 combs per gel



Mupid-exu

CAT# MPDEXU-01

unit includes combs, trays, power supply

ACCESSORIES



GeneCatcher

Disposable gel excision tips

CAT# PKB4.0 / PKB6.5

250 tips/bag

CAT# PKB4.0-R / PKB6.5-R

5 racks of 48 tips



Isolator

Agarose for gel electrophoresis

CAT# AGD050, 50g

CAT# AGD100, 100g

CAT# AGD250, 250g



665 Third Street, Suite 240 | San Francisco, CA 94107
415-247-8760 (tel) | 415-247-8765 (fax)
www.gelcompany.com

BMPDEXU-01-09



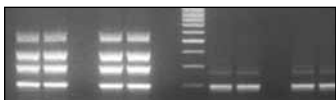
READY TO USE DOUBLE CONCENTRATED HOT-START TAQ PCR MIX

MegaMix~Royal

For tricky or unpredictable PCR

Protocol:

- Take 12.5 or 25 μ l **MegaMix~Royal**
- Add 1 μ l of primer mix
- Add template and make up to 25 or 50 μ l with water



Pentaplex PCRs with Microzone's DNAOK! kit using MegaMix~Royal as the PCR mix on the left hand side and MegaMix~Blue on the right hand side.

- simple and easy to use
- highly consistent results
- great value for money
- excellent stability without affecting fidelity
- saves money due to reduced pipetting, plastics and Taq wastage
- saves time and increases convenience, as blue loading dye is included
- prevents non-specific products and primer-dimers forming during PCR

MegaMix-Royal
CAT# 2MMR-05
200 x 25 μ l

FOR A COMPLETE SYSTEM

microLYSIS®-PLUS for rapid DNA release pre-amplification
microCLEAN for rapid post-amplification clean-up



665 Third Street, Suite 240 | San Francisco, CA 94107
415-247-8760 (tel) | 415-247-8765 (fax)
www.gelcompany.com

READY TO USE DOUBLE CONCENTRATED HOT-START TAQ PCR MIX

MegaMix~Gold

For Real-Time PCR

Protocol:

- Take 12.5 or 25 μ l **MegaMix~Gold**
- Add 1 μ l of primer mix
- Add template and make up to 25 or 50 μ l with water

- simple and easy to use
- highly consistent results
- excellent stability without affecting fidelity
- saves money due to reduced pipetting, plastics and Taq wastage
- available with ROX reference dye

MegaMix-Gold
CAT# 2MMG-05
200 x 25 μ l

MegaMix-Gold
CAT# 2RMMG-05
200 x 25 μ l

FOR A COMPLETE SYSTEM

microLYSIS®-PLUS for rapid DNA release pre-amplification
microCLEAN for rapid post-amplification clean-up

ACCESSORIES



Detection Plate
Optically clear 96 well
semi-skirted plates

CAT# MAP100C
25 units - Clear



ThermalSeal RT
Optically clear film
for Real-Time PCR

CAT# MAF800
100 units - 2 mil thickness