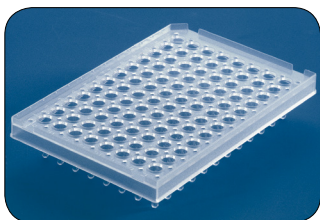


ARE YOU PAYING TOO MUCH FOR PCR PLATES?

DNA ANALYSIS ACCESSORIES

Detection Plate 96 well semi-skirted



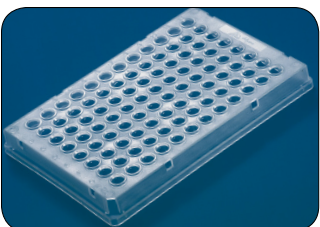
- Directly compatible with all major thermal cyclers including all abi instruments
- Can be used directly in ABI 96-well sequencers with no adapters necessary
- Cut-away corner for precise orientation
- Raised skirt
- Available in opaque black and white for fluorescent and luminescent based procedures

96w Semi-Skirted Detection Plate

CAT# MAP100C

25 units - Clear

Low Profile 96 well skirted



- Suitable for robotic systems
- 0.2ml max well volume (when sealed)
- Cut-away corner for precise orientation
- Enhanced efficiency of PCR
- Available in opaque black and white for fluorescent and luminescent based procedures

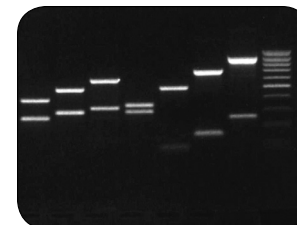
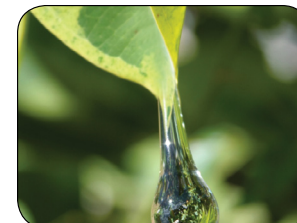
96w Skirted Low Profile Plate

CAT# MAP950C

25 units - Clear

DNA Analysis Tools

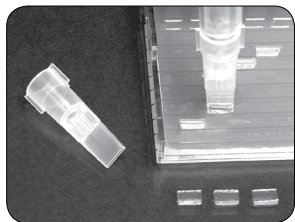
We offer a variety of DNA analysis accessories including GeneCatcher, CleanSpin and PCR plates.



665 Third Street, Suite 240
San Francisco, CA 94107
415-247-8760 (tel) | 415-247-8765 (fax)
www.gelcompany.com



A BETTER WAY TO EXCISE SPOTS & BANDS FROM GELS



GeneCatcher

Disposable gel excision tips

- Designed for removing bands from agarose gels
- One handed operation
- Push button gel release
- Push button tip release
- Avoid cross contamination
- Tips fit standard 1000 μ l pipettors

GeneCatcher Tips

CAT# PKB4.0

4.0mm x 1mm, 250/bag

CAT# PKB6.5

6.5mm x 1mm, 250/bag



GeneCatcher Tips - Racks

CAT# PKB4.0-R

5 racks of 48

CAT# PKB6.5-R

5 racks of 48



SIMPLE & RAPID GEL DNA RECOVERY

CleanSpin Gel DNA Recovery Kit



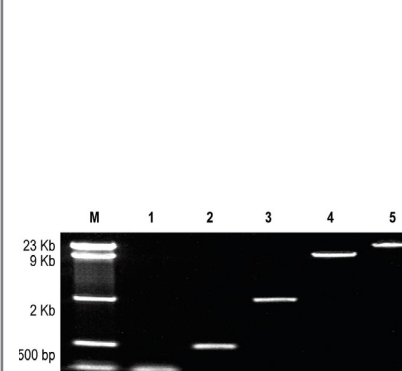
CleanSpin

CAT# DRK-50

50 preps

CAT# DRK-200

200 preps

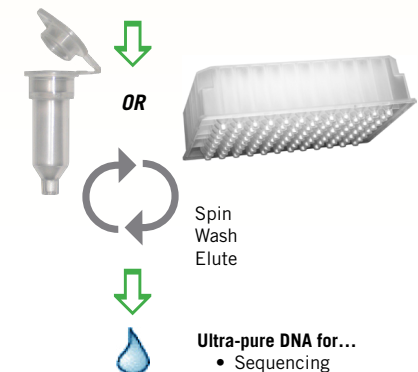


The CleanSpin Gel DNA Recovery Kit can be used to effectively recover DNA from agarose gels. Lanes: M: DNA Ladder; 1-5: ladder DNA excised from gel and recovered using the CleanSpin kit.

SPECIFICATIONS

- **Format:**
Spin Column/96-well Filtration Plate
- **Sample Sources:**
DNA excised from TAE/TBE-buffered agarose gels.
- **DNA Size Limits:**
50 bp to 23 kb
- **Minimal Elution Volume:**
 $\geq 6 \mu$ l
- **DNA Binding Capacity:**
Up to 5 μ g total DNA per column or well
- **Buffer Tolerance:**
TAE, TBE

DNA Agarose Gel Slices
+ ADB Buffer



Ultra-pure DNA for...

- Sequencing
- DNA Ligation
- Endonuclease Digestion