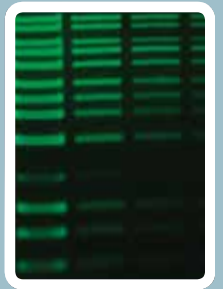
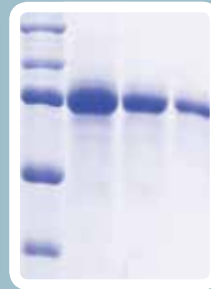
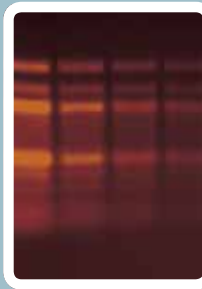
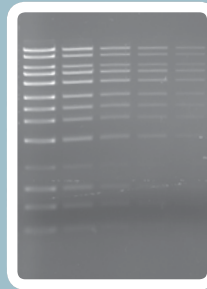




## OMEGA FLUOR™ PORTFOLIO



Omega Fluor™ Plus  
Omega Fluor™



Life Sciences

# Omega Fluor™ Imagers

Simple enough for personal use,  
versatile enough for a lab



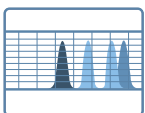
Omega Fluor Plus brings power and performance in an advanced, yet compact solution for superior DNA and protein imaging. In addition to the standard features included in the Omega Fluor Imager, the Omega Fluor Plus offers an integrated touch screen tablet for seamless imaging, standard epi-blue illumination for Safe-dye compatibility and a 3-position filter wheel for expanded dye flexibility. Optional white light trans-illumination, filters and analysis software complete the imaging solution.

Omega Fluor is the perfect entry level system for researchers performing basic DNA or protein imaging. Exceptional performance is achieved with a high resolution camera and optics featuring SmartCapture technology. UV trans-illumination comes with built in safety features, including a UV shielded viewport for real-time preview.



#### SmartCapture technology

Never worry about focusing on your image again



#### Application Flexibility

Multiple excitation and emission options provide exceptional dye and stain compatibility



#### Intuitive Image Capture Software

Workflow-driven interface for easy operation

exceptional  
performance for  
DNA or protein  
imaging

# Comparative Spec Table

		Omega Fluor Plus	Omega Fluor
Applications	DNA Gels	X	X
	Protein Gels (fluorescent dyes)	X	X
	Protein Gels (colorimetric)	Optional	Optional
	X-ray Film	Optional	Optional
Dyes and Stains	UV-excitable Fluorescence	X	X
	Blue-excitable Fluorescence	X	Optional
	Colorimetric/ Absorbance	Optional	Optional
Excitation sources	Trans-UV Illumination (302 nm)	X	X
	Trans-UV Illumination (365 nm)	X	X
	EPI-white Illumination	X	X
	EPI-blue Illumination	X	No
	Trans-white Illumination	Optional	Optional
	Trans-blue Illumination	Optional	Optional
Emission Filters	Orange (590 nm)	X	X
	Red (670 nm)	Optional	Optional
	Green (572 nm)	Optional	Optional
	Blue (498 nm)	Optional	Optional
System Specifications	Resolution	5 MP	5 MP
	Lens	Fixed	Fixed
	Cooling	No	No
	Filter Wheel	3-position	1-position
	Integrated Computer	Tablet	No
	Image Capture Software	Yes	Yes
	Analysis Software	Optional	Optional
	Field of View:	24.0 x 20.0 cm	24.0 x 20.0 cm
	Footprint (W-D-H):	35.6 x 31.8 x 63.5 cm	35.6 x 31.8 x 63.5 cm

# Ordering Information

## Part Number

## Description

### SYSTEM

81-12520-00	Omega Fluor™ Gel Documentation System, 302 nm
81-12530-00	Omega Fluor™ Gel Documentation System, 365 nm
81-12521-00	Omega Fluor™ Plus Gel Documentation System, 302 nm
81-12531-00	Omega Fluor™ Plus Gel Documentation System, 365 nm

### ACCESSORIES

34-12018-00	Clear Gel Tray (Small)
34-12215-00	Clear Gel Tray (Large)
34-12019-00	White Light Conversion Tray
34-12020-00	Blue Light Conversion Tray
23-12021-00	Printer, P-95DW
26-12022-00	Thermal Paper
34-12218-00	Test Target
32-12093-00	Red Filter (676 nm)
32-12094-00	Green Filter (572 nm)
32-12122-00	Blue Filter (497 nm)
23-12254-00	Stylus
23-12255-00	Wireless Mouse & Keyboard Set
23-12257-00	USB to LAN Converter

Gel Company, Inc.  
665 Third Street, Suite 240  
San Francisco, CA 94107 | 415-247-8760  
[www.gelcompany.com](http://www.gelcompany.com)

© 2014 Aplegen, Inc. All rights reserved. The Aplegen word mark, and the Aplegen logo are trademarks of <Zá8db eVcŇ Inc. All other trademarks, service marks and trade names appearing in this literature are the property of their respective owners.