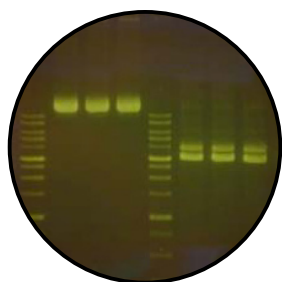


PROTOCOL

Amber DNA Fluorescent DNA Stain

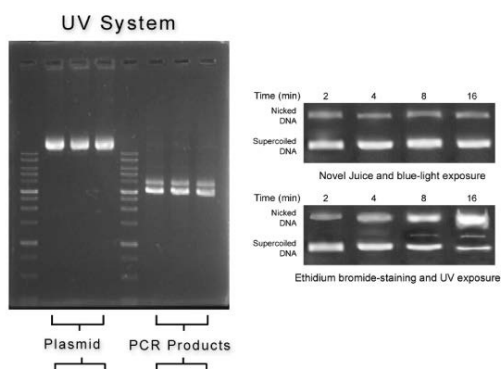


Part Number: AMD-1000
Version: 1.0
Storage: Store at room temperature or at 4°C up to 12 months. For longer periods, store at -20°C. Amber DNA Dye is light sensitive and should be stored protected from light.
Batch Number: Marked on tube

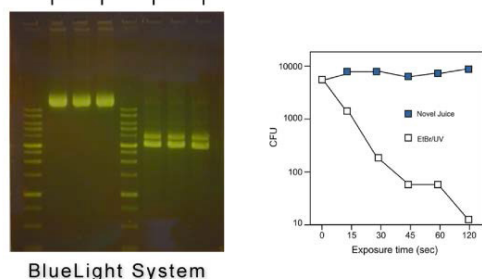
General Protocol:

1. Vortex Amber DNA for 10 seconds prior to use.
2. Dilute 1 part Amber DNA with 5 parts DNA sample and mix.
Note: Amber DNA must be added to DNA markers in order to visualize the ladder bands simultaneously with the sample after electrophoresis.
3. Load sample and run according to standard procedures.
4. After the electrophoresis, remove gel and place on UV or a visible-light transilluminator to immediately visualize bands.
5. Gels can be post-stained with Ethidium Bromide if desired.

Less DNA damage, improved cloning efficiency



Slower migrating species are indicative of a linear or relaxed circular vector resulting from DNA nicking or strand breaks.



PCR fragments separated on agarose gels containing ethidium bromide or novel juice were exposed to UV or blue light for specific amounts of time, then used for subcloning. Even brief ethidium bromide/UV treatment yielded significantly fewer CFUs.